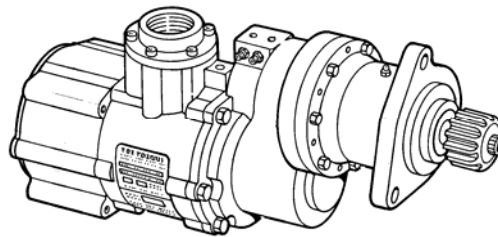


# ILLUSTRATED PARTS BREAKDOWN



## T100-V **TURBOTWIN** Engine Air Starter



### IMPORTANT NOTE

The purpose of this illustrated parts breakdown is to provide part number identification of the various components of the listed starters. Only those parts which may be disassembled at the field or repair shop level are broken out and identified. Certain parts or components are "factory only" assemblies, and should not be disassembled below the level shown in this document. Do not disassemble or reassemble the starter without referring to the proper TDI TURBOTWIN service manual. The use of improper procedures, non-authorized replacement parts or incorrect tools, may result in a faulty operating starter which could affect its performance or create a hazardous condition.

**ILLUSTRATED PARTS LIST FOR MODEL T100-V SERIES AIR STARTERS**

<b>KEY NO.</b>	<b>DESCRIPTION</b>	<b>PART NUMBER</b>	<b>OVERHAUL KIT P/N: T10V-28574</b>
1	Screw (6)	11F- 25020-064	x
2	Exhaust Guard	2-28175	
3	Screw	14F- 25028-012	x
4	Washer	9-93047	
5	Rotor 2 (See Note)	2-26604	
6	Woodruff Key	9-90211-006	
7	Bearing Spacer	9-93091-005	x
8	Bearing (2)	9-91224	x
9	O-ring	9-90001-027	x
10	Wave Spring Washer	9-90439	x
11	Screw (4)	11A-37516-008	
12	Nozzle 2, R.H. (See Note)	2-27825-00R	
12	Nozzle 2, L.H. (See Note)	2-27825-00L	
13	O-ring (2)	9-90001-050	x
14	Seal Spacer (2)	9-93083-001	x
15	Lip Seal (2)	2-26719	x
16	Rotor 1 (See Note)	2-26603	
17	Woodruff Key	9-90211-009	
18	Screw (8)	14F-19024-008	x
19	Nozzle 1, R.H., 9 Nozzles (See Note)	2-26718-09R	
19	Nozzle 1, L.H., 9 Nozzles (See Note)	2-26718-09L	
19	Nozzle 1, R.H., 12 Nozzles (See Note)	2-26718-12R	
19	Nozzle 1, L.H., 12 Nozzles (See Note)	2-26718-12L	
19	Nozzle 1, R.H., 15 Nozzles (See Note)	2-26718-15R	
19	Nozzle 1, L.H., 15 Nozzles (See Note)	2-26718-15L	

# TDI TURBOTWIN™

FROM TECH DEVELOPMENT

KEY NO.	DESCRIPTION	PART NUMBER	OVERHAUL KIT P/N: T10V-28574
19	Nozzle 1, R.H., 21 Nozzles (See Note)	2-26718-21R	
19	Nozzle 1, L.H., 21 Nozzles (See Note)	2-26718-21L	
20	Pipe Plug	9-93556-004	
21	O-ring	9-90001-034	X
22	Screw (6)	14F-31218-016	X
23	Inlet Flange	1-18967	
24	O-ring	9-90001-037	X
25	Turbine Housing	2-27869	
26	Pipe Plug	9-93501-004	
27	O-Ring	9-90001-050	X
28	Ring Gear	2-27870	
29	Bearing Spacer	9-93091-001	
30	Clamping Plate	2-26750	
31	Turbine Shaft (7.5:1)	2-26554	
31	Turbine Shaft (9.0:1)	2-27238	
31	Turbine Shaft (11.4:1)	2-28710	
32	Retainer Ring (3)	9-92001-001	
33	Carrier Shaft (7.5:1)	2-27798-002	
33	Carrier Shaft (9.0:1)	2-27798-001	
33	Carrier Shaft (11.4:1)	2-27798-003	
34	Spacer, Gear (6)	9-93004	
35	Planet Gear (3) (7.5:1)	1-19441	
35	Planet Gear (3) (9.0:1)	1-18779	
35	Planet Gear (3) (11.4:1)	1-19440	
36	Needle Bearing (3)	9-91004-001	X
37	Planet Shaft (3)	2P-20182	

<b>KEY NO.</b>	<b>DESCRIPTION</b>	<b>PART NUMBER</b>	<b>OVERHAUL KIT P/N: T10V-28574</b>
38	Woodruff Key	9-90227-025	
39	Bearing (2)	9-91351	X
40	Wave Spring Washer	9-90402-025	
41	Spring Retaining Plate	2-27731	
42	Retaining Ring	9-92001-033	
43	Bearing Spacer	9-93007-003	
44	Housing, Bearing	2-27726	
45	Screw (4)	14F-25020-012	X
46	Gear, Spur	2-27712	
47	Lockwasher, Bearing	9-93061-007	
48	Locknut, Bearing	9-92127-007	
49	Housing, Gearbox	2-27728	
50	Screw (6)	71F-25020-36	X
51	Fitting, Filter	2-28270	
52	Plug, Pipe (2)	9-93556-004	
53	O-Ring, Piston	9-90001-327	
54	Piston	2-27921	
55	Retainer Ring	9-92001-041	
56	Bearing	9-91254	X
57	Spline, Helical Shaft, R.H. (See Note 1)	2-27977-00R	
57	Spline, Helical Shaft, L.H. (See Note 1)	2-27977-00L	
58	Spring, Compression	9-90444	
59	Clutch, Helical, R.H.	2-27713	
59	Clutch, Helical, L.H.	2-27716	
60	Ring, Retainer	9-92001-037	
61	Bearing, Needle Roller	9-91409	X

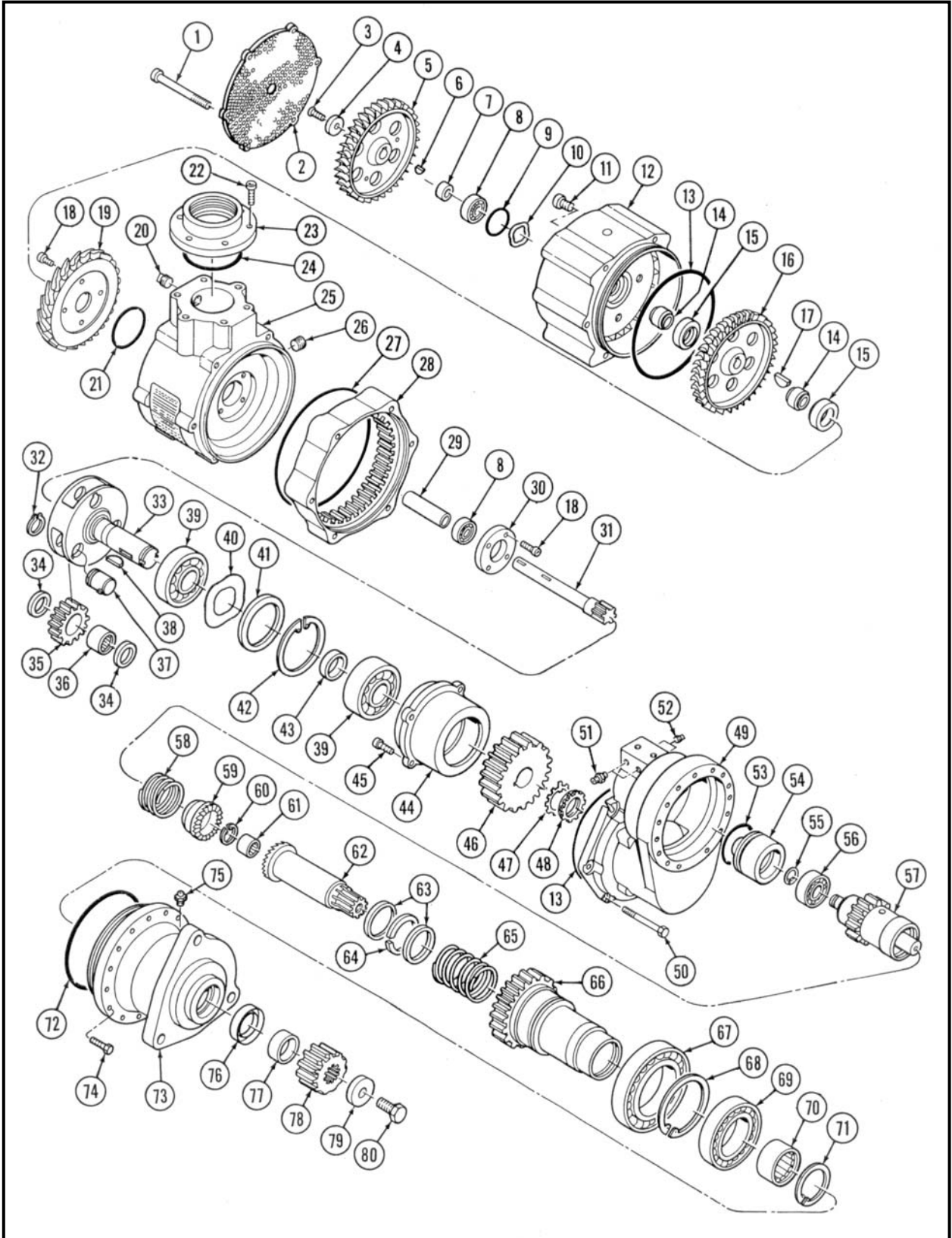
# TDI TURBOTWIN™

FROM TECH DEVELOPMENT

KEY NO.	DESCRIPTION	PART NUMBER	OVERHAUL KIT P/N: T10V-28574
62	Shaft, Drive Pinion R.H.	2-28169-001	
62	Shaft, Drive Pinion L.H.	2-28169-002	
63	Washer, Thrust (2)	9-93120	x
64	Ring, Retainer	2-28051	x
65	Spring, Compression	9-90447	
66	Gearshaft, Spur	2-27711	
67	Bearing, Ball	9-91431	x
68	Ring, Retaining	9-92001-036	
69	Bearing, Ball	9-91434	x
70	Bearing, Needle Roller	9-91435	x
71	Ring, Retainer	9-92001-042	
72	O-Ring	9-90001-158	x
73	Housing, SAE	2-27729	
74	Screw (8)	71F-25020-016	x
75	Fitting, Vent	9-93662-012	
76	Seal, Lip	2-22084	x
77	Spacer, Pinion	2-28178	
78	Pinion, 6/8P, 12T, Bi-directional	2-28167	
78	Pinion, 6/8P, 15T, Bi-directional	2-28568	
78	Pinion, 3.5 MOD, 15T, Bi-directional	2-28242	
78	Pinion, 3.5 MOD, 17T, Bi-directional	2-28632	
79	Washer, Pinion	9-93124	x
80	Screw	71F-50020-016	x

**Note:** The rotation of the turbine assembly is opposite from the pinion rotation, therefore the rotors and nozzles must be configured for LH (CCW) rotation if the pinion rotation is RH (CW), or configured for RH (CW) if pinion rotation is LH (CCW).

**TDI TURBOTWIN™**  
FROM TECH DEVELOPMENT



Illustrated Parts Breakdown (T100-V TURBOTWIN Air Starters)